

Dehumidifier RECUSORB R-062/082/102/122



18 - 95 kg/h

Dehumidifying capacity
at 20°C / 60%RH

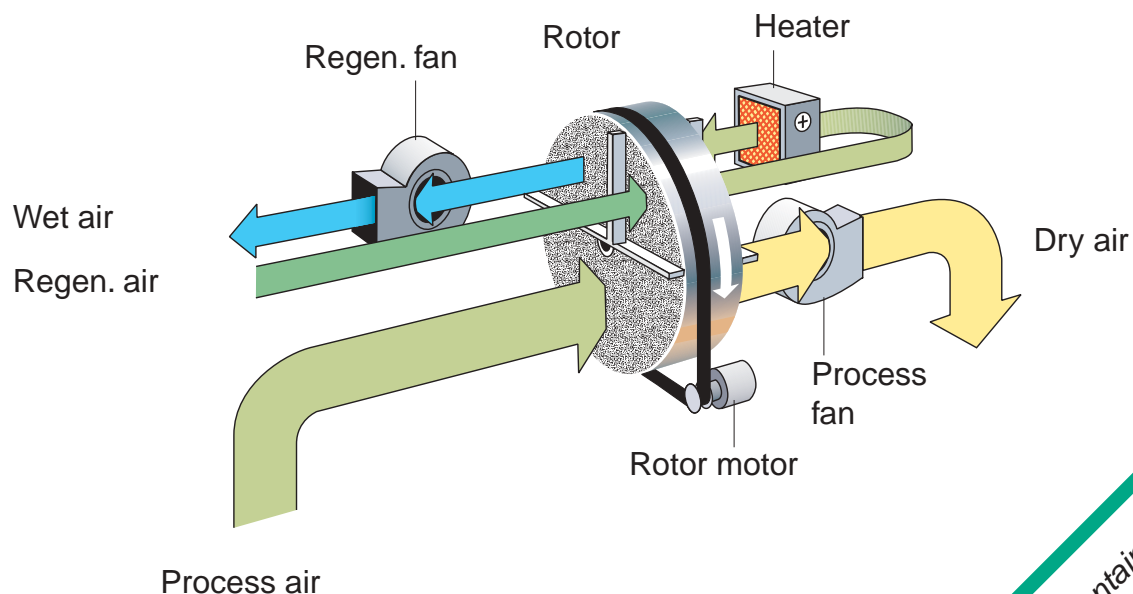
2600 - 13 500 m³/h

Dry air flow



- Washable rotor
- No desiccant carry-over
- Double skin insulated

- Built-in heat recovery
- Low dry air temperature
- Long lifetime



Contains the SSCR rotor -
one step ahead in
adsorption technology

TECHNICAL DATA

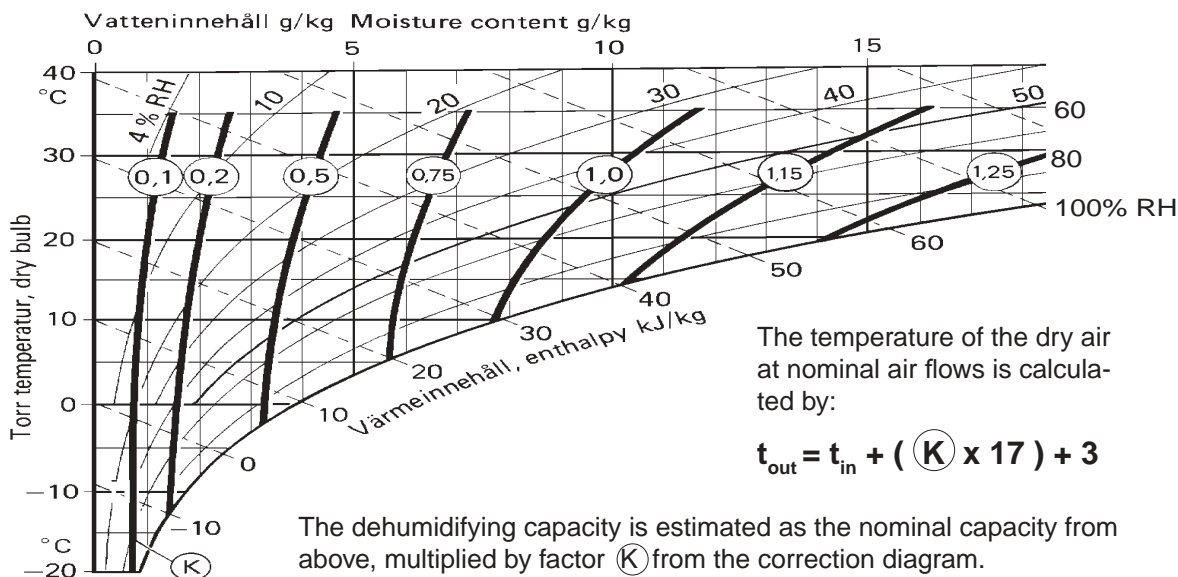
Dehumidifier model	R-062	R-082	R-102	R-122
Nominal capacity * [kg/h]	18	37	59	95
Dry air flow** [m ³ /h]	2600	5500	8200	13500
Static pressure at disposal [Pa]	200	200	200	200
Wet air flow ** [m ³ /h]	850	1900	2900	4700
Static pressure at disposal [Pa]	200	100	100	100
Heater power*** [kW]	21	42	66	112
Maximum electric consumption [kW]	24	49	76	124
Supply fuse 3x 230/400V 50Hz [A]	80/35	160/80	250/125	/200
Weight [kg]	438	550	760	1210

* Valid for inlet conditions 20°C/ 60%RH. For other inlet conditions the capacity can be calculated by using the correction factor from the diagram shown below.

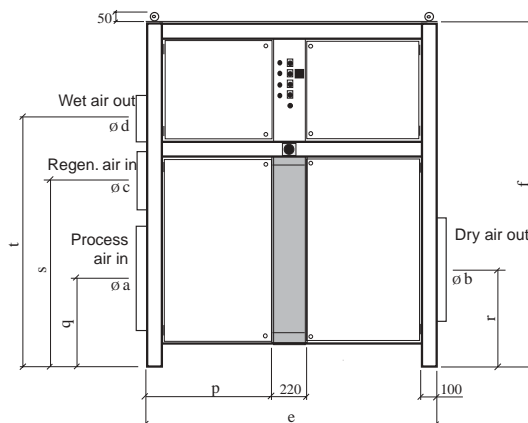
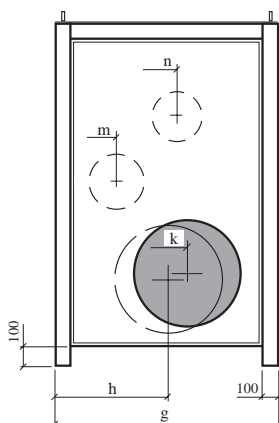
** Volume flow for density 1,20 kg/m³.

*** Available with electric heater, steam heater or gas heater.

CORRECTION DIAGRAM



DIMENSIONS



R-	062	082	102	122
a	400	500	630	800
b	315	400	630	800
c	200	315	400	500
d	200	250	315	400
e	1400	1600	1800	2000
f	1650	1800	2100	2300
g	780	1000	1300	1500
h	390	500	650	640
k	510	640	810	960
m	390	340	350	400
n	230	450	770	780
p	590	690	790	890
q	400	450	510	600
r	420	490	570	630
s	790	930	1080	1350
t	1120	1290	1540	1680

[mm]

Subject to change without notice.

Seibu Giken DST AB

Avestag, 33, S-163 53 Spånga, Sweden
 www.dst-sg.com E-mail: info@dst-sg.com
 tel: +46-8 4457720; fax: +46-8 4457739

Representative: